



INTERNAL COMPETITION BOOKLET 2025/26

During the course of a Club Season members will be able to enter their images into a variety of photographic competitions. Scores awarded in these competitions will go towards the "Photographer of the Year Awards" at the end of the season.

On the next few pages the Internal Competitions, that may be offered, are explained in more detail.

STATUS OF MEMBERS FOR CLUB COMPETITIONS



ADVANCED MEMBERS



An Advanced member is one who fulfils any one of the following conditions:

1. A Beginner who has gained the status of 'Doncaster Camera Club Beginner of the Year'.
2. A Beginner who has had an award or had 3 or more entries accepted in any open exhibition (including the Yorkshire Photographic Union.)
3. A member who holds any recognised photographic distinction (e.g. RPS, PAGB, BPE, PSA etc.) or is professionally engaged in photography. [or has been an advanced member of another camera club]

BEGINNERS' MEMBERS



A Beginner is a member who does not fulfil any of the Advanced criteria above. The Council reserves the right to review individual cases.

NOTES



1. A member's Status in any other Camera Club will be considered in deciding their competition status in the Doncaster Camera Club.
2. Any Beginner who, in the opinion of the committee, has reached a satisfactory standard in a particular Section can be promoted to the Advanced Section.
3. All promotions to take effect from 1st September each year.
4. A Beginner, with the Council's agreement, may defer their promotion. However, if this option is taken the Beginner must requalify in future competitions to gain the Advanced Classification.

RULES APPLYING TO ALL DONCASTER CAMERA CLUB COMPETITIONS

1. Entries will only be accepted from fully paid-up members.

2. Entries must be in the possession of the Competition Secretary no later than the date shown in the Programme. Failure to do so may result in the entries not being accepted.

3. All entries must be the original photographic work of the author, including all elements of a composite image. Prints of the images may be home or commercially printed.

4. For the purposes of DCC competitions, an IMAGE is considered to include any version of that image made from the original file (or negative) produced by the camera at the time of taking the photograph.

5. For all DCC Print competitions the mount sizes must be 40cm. x 50cm.

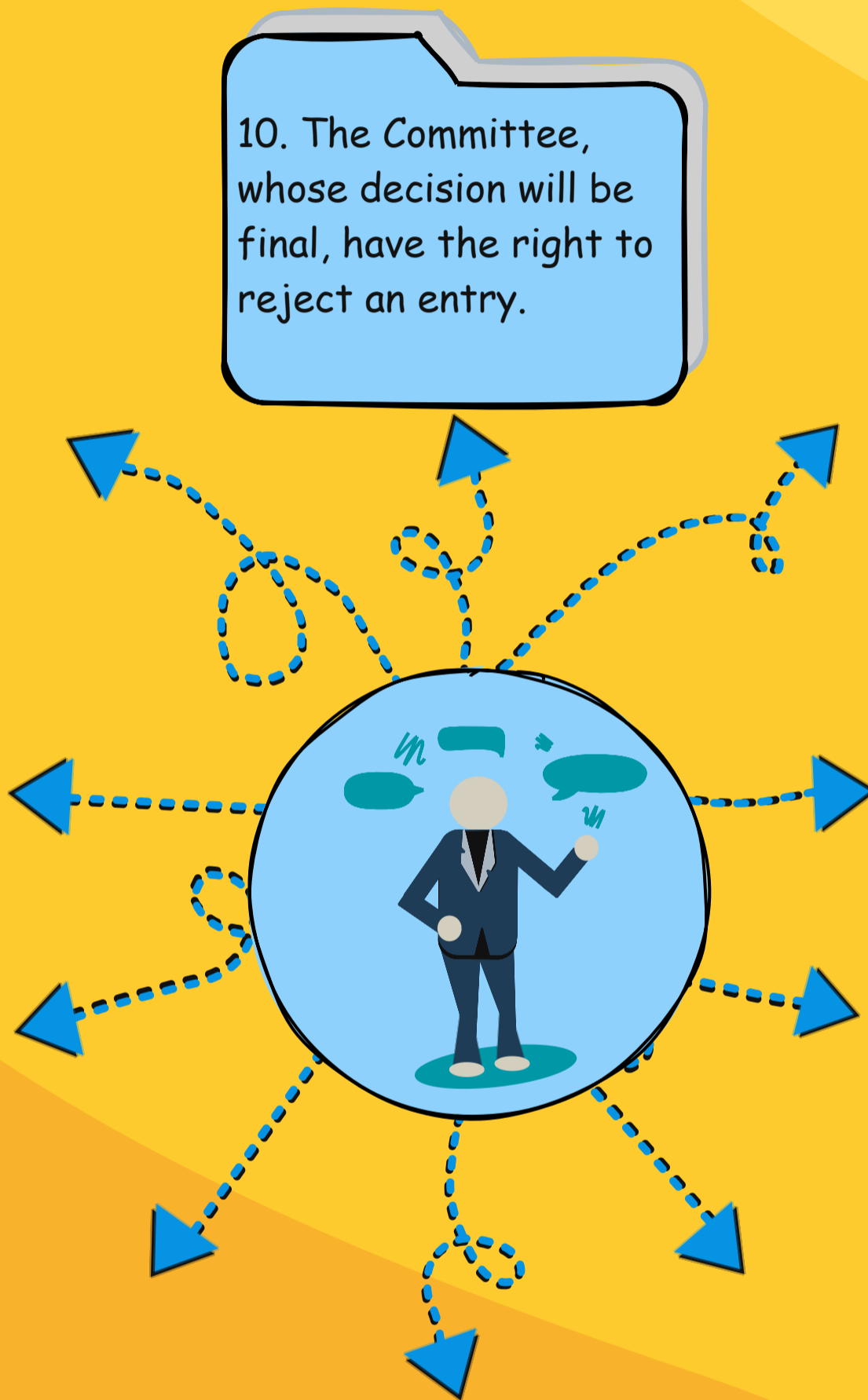
6. DPIs must be no larger than 1600 pixels wide and 1200 pixels high, with one dimension (width or height) at its maximum. The ppi setting of the images is not relevant.

7. Each print that is entered must be accompanied by a digital copy.

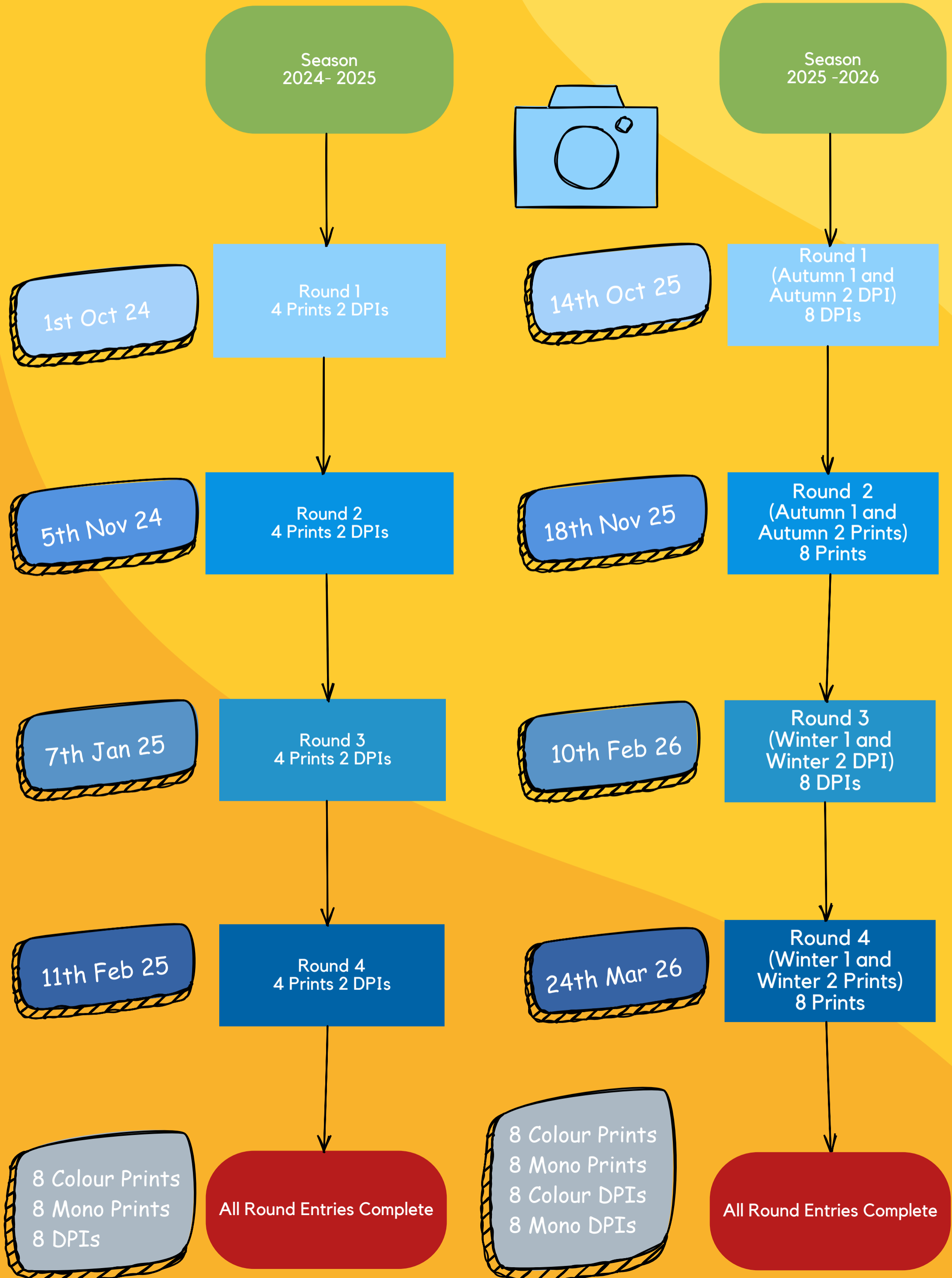
8. PhotoEntry is an on-line application, allowing photographers to submit their digital images from their computers, directly to the Competition Secretaries. This will be the only method available for submitting digital images

9. PhotoEntry will be used to enter DPIs (Digitally Projected Images) and also the digital copies of prints.

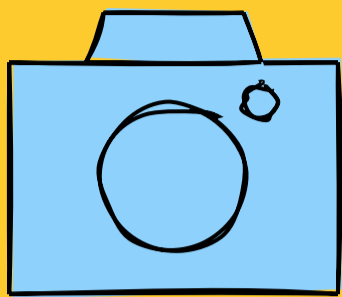
10. The Committee, whose decision will be final, have the right to reject an entry.



Changes to the Rounds Competitions



Season 2025 -2026 How it works



14th Oct 25

Round 1
(Autumn 1 and
Autumn 2 DPI)
8 DPIs

18th Nov 25

Round 2
(Autumn 1 and
Autumn 2 Prints)
8 Prints

10th Feb 26

Round 3
(Winter 1 and
Winter 2 DPI)
8 DPIs

24th Mar 26

Round 4
(Winter 1 and
Winter 2 Prints)
8 Prints

8 Colour Prints
8 Mono Prints
8 Colour DPIs
8 Mono DPIs

All Round Entries Complete

Entry

For Rounds 1 to 4 members may enter up to 8 images. Photo entry will be set up to receive these in 2 sets of 4 images (2 mono and 2 Colour).

On the Judging night, the judge will judge both sets of entries separately, one before the tea break and one after. Colour and mono images will be judged separately.

Scoring

At the awards evening award will be given for:

Colour Print

Mono Print

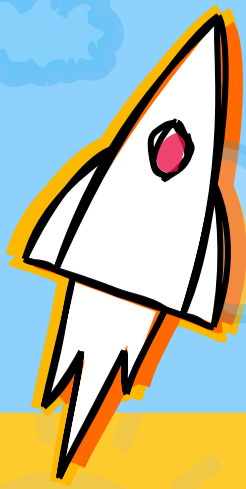
Colour PDI

Mono PDI

All scores achieve will count towards the "Photographer of the Year" competition, together with scores from the Panel Competition, and the Annual Competitions

INTERNAL COMPETITIONS

CHECKLIST



1 The Rounds Competition

There will be four Round Competitions during the autumn and winter months.

In total, 8 Colour prints, 8 Mono prints, and 16 DPI images (8 colour and 8 mono can be submitted.

Images for the Rounds competition must not have been entered into any previous DCC competition.

2 Panel Competition (Print Only)

This competition is to promote the idea of presenting a set of three related or themed prints as a panel.

The panel will consist of three prints. Each print should 'relate' to the other two in some way to create a cohesive panel.

Only one of the three images making up a panel for the Panel Competition may have been entered in a previous Doncaster Camera Club competition.

3 Mobile Phone Image Competition (DPIs), an occasional Competition

A competition solely for images taken on a mobile phone or tablet.

Up to two images may be entered by any one member but they should not have been entered into any previous DCC competitions.

Basic post editing may be used to enhance the image and adjust the image size.

E.g. Cropping, Colour correction, Dodging/burning, Curves/Levels and spot removal.

Only the original single image should be presented. Composite images will not be accepted.

4A Annual Print Competition

10 print images may be entered in any of the categories offered.

The images may have been entered in any other DCC competition previously. But only one image from a previously submitted panel may be used.

If an image is deemed not to fit the category definition the the Competition Secretary reserves the right to move the image to either the Open Colour or Open Mono categories, which ever id more appropriate.

4B Annual DPI Competition

10 DPI images may be entered in any of the categories offered.

The images may have been entered in any other DCC competition previously.

If an image is deemed not to fit the category definition the the Competition Secretary reserves the right to move the image to either the Open Colour or Open Mono categories, which ever id more appropriate.

'Artificial Intelligence' in Photography

In October 2023 The Photographic Alliance of Great Britain (PAGB) issued guidance about the creation of images that are submitted for entry into competitions, in particular trying to address the issue of how Artificial Intelligence is used in creating the image.

They state:

"How an individual creates an image for their own use, and what source material is coopted for image creation, is entirely at the individual's discretion. But, when an image is submitted alongside the images of others into a competition or exhibition, then each participant needs to be assured that the other participants are using only their own original work."

Images must be entirely the work of the Photographer. In composite images, all component images must meet this requirement. For the avoidance of doubt, use of images from any other source including, but not limited to, royalty free image banks and clipart are not permitted.

With specific reference to AI they draw the distinction between:

Image Automation - which is allowed
and
Image Generation - which is NOT allowed
these are defined below.



Image Automation

There are now many image processing methods available in camera, or in processing software or in plug-ins for such software, which have been refined or trained by their developers using the characteristics of many images. The list of methods is extremely long with examples such as face-detection focussing, raw conversion, monochrome conversion, noise reduction, focus stacking, HDR, panorama stitching and many more.

Some categories of competition may have some restrictions, e.g. in Nature and Wildlife Competitions



Image Generation

Banks of individual textures and skies have been available for some time and there are software systems which will overlay an imported texture or substitute a sky. Increasingly there are image generator systems which draw on, or have been developed or trained on, content from large image banks to create new images, via a user prompt or specification. Any importation, whether manual or automated, of all or part of a single image or of a generated image which includes or has been developed from the work of others, means that the resulting image content is not entirely the work of the photographer.

Competition Dates 2025/26 Season

Competition	Entry (<i>max</i>)	Submission	Judging
Round 1	Autumn 1 (4 DPIs)	14 th October 2025	4 th November 2025
Autumn DPIs	Autumn 2 (4 DPIs)		
Round 2	Autumn 1 (4 Prints)	18 th November 2025	9 th November 2025
Autumn Prints	Autumn 2 (4 Prints)		
Print Panel	2 x 3 image Panels	13 th January 2026	27 th January 2026
Round 3	Winter 1 (4 DPIs)	10 th February 2026	3 rd March 2026
Winter DPIs	Winter 2 (4 DPIs)		
Round 4	Winter 1 (4 Prints)	24 th March 2026	31 st March 2026
Winter Prints	Winter 2 (4 Prints)		
Annual Competitions	10 DPIs	24 th March 2026	21 st April 2026 DPIs
	10 Prints		28 th April 2026 Prints

Notes

1. For all Round competitions members may submit a maximum of 2 colour and 2 mono images for Autumn 1, Autumn 2, Winter 1, and Winter 2 competitions
2. In the Print Panel competition there is no restriction on whether the panels contain colour or mono images or a combination of both.
3. For both Annual Competitions, DPI and Print, apart from the Open Colour and Open Mono sections, there are no restrictions of colour or mono images for the other sections.

External Competitions

If you enter an image into a DCC internal competition then you automatically give permission for that image to be used by DCC in any external competition they feel appropriate.
If you have an issue with this, e.g. you are also member of another camera club, please discuss the situation with the Competition Secretary.

Annual Competitions

Prints	Projected
Open Colour	Open Colour
Open Monochrome	Open Monochrome
Architecture & General Record	
People, Portrait & Figure Studies	People, Portrait & Figure Studies
Nature	Nature
Sport/ Action	Sport/ Action
Creative	Creative
Travel	Travel
'Scapes	'Scapes
Wildlife	Wildlife

There are 10 print and 9 DPI Categories available for entry. With the exception of the two Wildlife sections, the other sections are defined in exactly the same way as for the YPU Annual Competition Entry definitions

Respecting the history and traditions of Doncaster Camera Club

Respecting the history and traditions of Doncaster Camera Club
Over the years many trophies and awards have been donated to the Club by past members and their relatives. For this reason awards and trophies will be given to entries in the Wildlife sections. In addition an award for the "Best Garden Bird DPI image" will be selected from the Nature DPI Section by the DPI Judge.

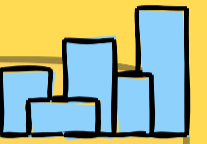
All images entered in the Wildlife Sections will be eligible for entry in the YPU Nature sections of the YPU Annual Exhibition, should the author choose to do so.

PHOTOGRAPHY CATEGORIES OVERVIEW



ARCHITECTURE AND GENERAL RECORD

Entries should be buildings, inanimate objects such as vehicles, machinery, statues or other objets d'art. The emphasis is on a high technical quality image which makes an accurate record of the subject. Artistic interpretation is not acceptable in this class, although direct monochrome conversions are. Digital manipulation should be limited to cropping, sharpening, contrast, colour corrections and correction of converging verticals. Only minor distractions or blemishes may be removed from the image. Any adjustments should not alter the main content of the original photograph. Titles should be factual, simply naming the building, feature or object.



CREATIVE IMAGES

Images for this category are often highly manipulated and may contain elements from several images which produce a final image that stimulates the imagination of the viewer. The image may be of any subject matter and must display a change in natural colour, form, shape or any combination of these three. All images must be original and may not incorporate elements produced by anyone else. Artwork or computer graphics generated by the entrant may be incorporated but the original photographic content must predominate. Images may not be constructed entirely within a computer.



SPORT/ACTION PHOTOGRAPHY

Sport images should capture the intensity, emotions and action of the chosen sport subject. It could be professional or amateur, the focus could be on the sportsperson, the sport environment, the effort extended, the struggle or conflict or the rewards, but a strong narrative must be present. Action images should be of a moving subject or object, which depicts the essence of action, other than sport.

Processing of the captured image, by cropping, exposure adjustment, colour correction, noise minimisation, dodging/burning, HDR and sharpening, is permitted, as is cloning of image defects and minor distractions including overlapping elements.



'SCAPES IMAGES

A 'scape image shows a vista. Included, but are not restricted to, landscapes, cityscapes, seascapes, waterscapes and skyscapes. An image may include elements such as a single tree, building or people – they must not dominate but be part of an overall image providing a mood or atmosphere of the environment captured.



TRAVEL PHOTOGRAPHY

A Photo Travel image expresses the characteristic features or culture of a land as they are found naturally. There are no geographic limitations. Images from events or activities arranged specifically for photography, or of subjects directed or hired for photography are not appropriate. Close up pictures of people or objects must include features that provide information about the environment. Techniques that add, relocate, replace or remove any element of the original image, except by cropping, are not permitted. The only allowable adjustments are removal of dust or digital noise, restoration of the appearance of the original scene, and complete conversion to greyscale monochrome. Other derivations, including infrared, are not permitted. All allowed adjustments must appear natural.



NATURE PHOTOGRAPHY

Nature means Images where living organisms are the primary subject matter. The story telling value of an Image will normally be weighed more than the pictorial quality.

Nature includes:

- Images taken with subjects in controlled conditions such as zoos, game parks, botanic gardens, aquariums and enclosures where the subjects are dependent on man for food. Scientific bands, tags or collars are permissible.

Nature excludes:

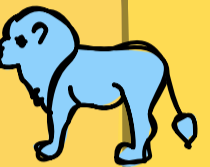
- Images where the subjects are obviously domestic animals or plants.
- Images where an obviously artistic treatment has been applied.

Processing of the captured image, by cropping, exposure adjustment, colour correction, noise minimisation, dodging/burning, HDR, focus stacking and sharpening, is permitted, as is cloning of image defects and minor distractions including overlapping elements.

An Image appearing to meet these criteria will be accepted as Nature.

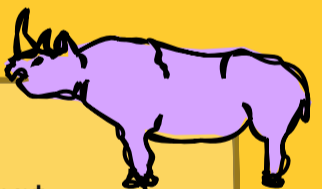
The Judges will normally assume that any Image presented to them is eligible.

Access to some biological subjects may be restricted. Where that is relevant, then Photographers warrant that they have followed relevant codes of practices and hold any necessary licences.



WILDLIFE PHOTOGRAPHY

Image is entered in wildlife sections, meeting the nature photography definition above are further defined as one or more extant zoological or botanical organisms free from and unrestrained in nature or adapted habitat. Landscapes, geologic formations, photographs of zoo, or game, or farm animals, or of any extant zoological or botanical species taken under control conditions are not eligible in the Wildlife sections. Wildlife is not limited to animals, birds, and insects. Marine subjects and botanical subjects (including fungi and algae) taken in the wild are suitable wildlife subjects, as are carcasses of extant species. Wildlife images may be entered in nature sections of exhibitions.



PORTRAIT AND FIGURE STUDIES

Shall include figure studies, groups of a portrait nature and animal portraits.



MONO IMAGES

Monochrome Images include:

- An Image in tones of neutral grey ranging from transparent/white to opaque/black.
- An Image in a single colour:
 - A Print using a chemical process such as sepia, cyanotype, etc.
 - A digitally produced Image 'colorized' in a single hue.

